

Vantage Point

27600 CHAGRIN BLVD * WOODMERE * OHIO * 44122



- > FOUR-STORY OFFICE BUILDING LOCATED IN THE HEART OF THE BEACHWOOD / CHAGRIN BLVD CORRIDOR, CLOSE TO THE MOST AFFLUENT AND DESIREABLE AREAS OF CLEVELAND
- > MODERN STYLED BUILDING WITH STUCCO EXTERIOR AND BRONZE-TINTED WINDOWS. THE RECENTLY UPDATED LOBBY FEATURES 2 ELEVATORS AND GUEST RESTROOMS.
- > LOCATED AMONG THE REGION'S FINEST SHOPPING, DINING, AND LODGING
- > IMMEDIATE ACCESS TO I-271/CHAGRIN BLVD INTERCHANGE
HIGH TRAFFIC EXPOSURE ON CHAGRIN BLVD - ADT: 32,550 CARS PER DAY
- > 34,398 RENTABLE SQUARE FEET
8,500 SF AVERAGE FLOOR PLATE
SUITE SIZES FROM 800 SF - 6000 SF
- > FREE 125 SURFACE CAR PARKING
- > 24/7 ACCESS

LEASING
CONTACT:
NEAL LADER
Director of Leasing
216.831.9110 [O]
216.310.1956 [C]
216.292.7529 [F]
nlader@azmanagement.com

AZ MANAGEMENT CO.
3439 West Brainard
Suite 260
Woodmere, Ohio
44122
216.831.9110
AZmanagement.com



AZmanagement.com

Vantage Point

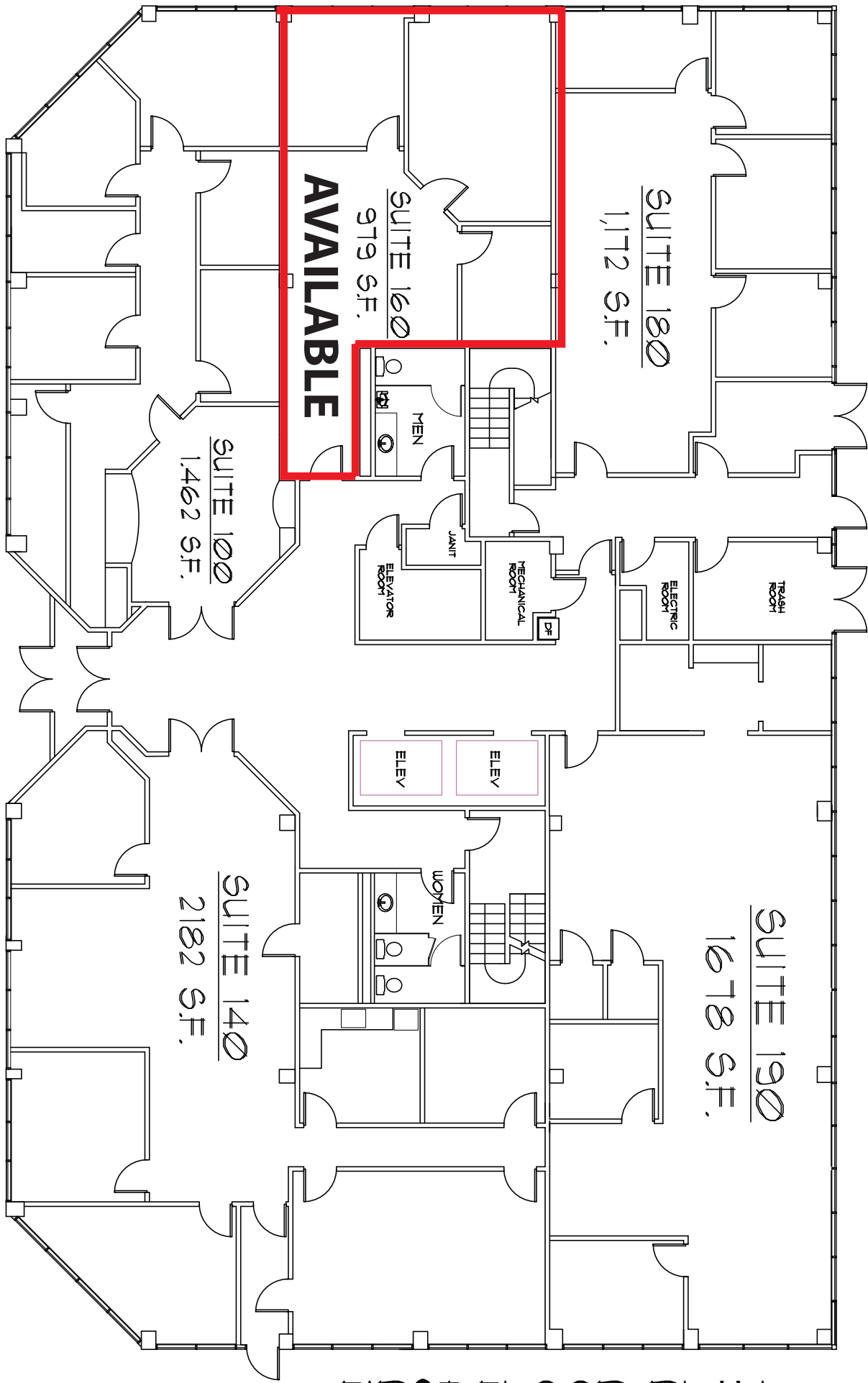
27600 CHAGRIN BLVD * WOODMERE * OHIO * 44122

LOCATION AERIAL



LEASING
CONTACT:
NEAL LADER
Director of Leasing
216.831.9110 [O]
216.310.1956 [C]
216.292.7529 [F]
nlader@azmanagement.com

AZ MANAGEMENT CO.
3439 West Brainard
Suite 260
Woodmere, Ohio
44122
216.831.9110
AZmanagement.com



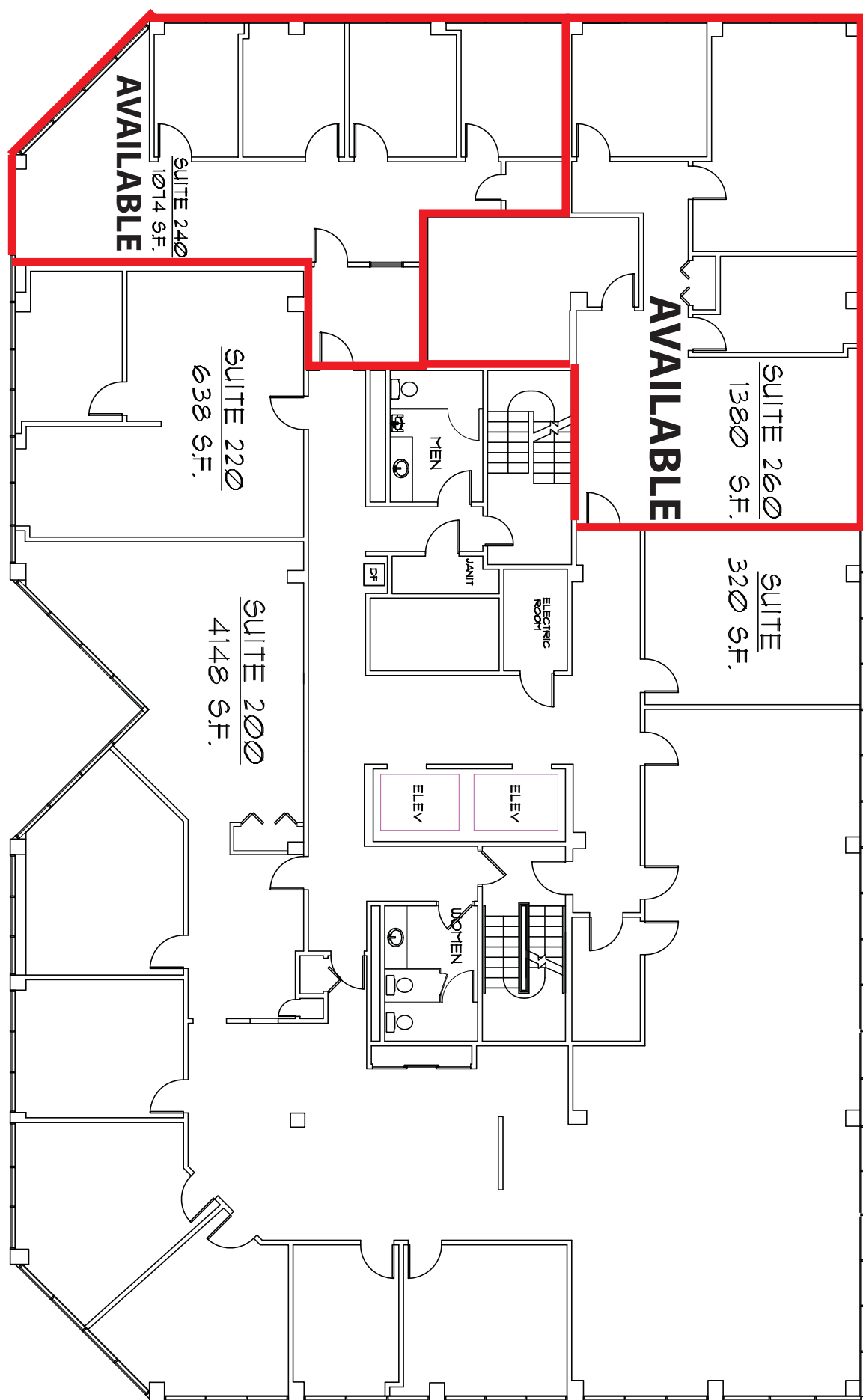
FIRST FLOOR PLAN

SUITE SIZES ARE APPROXIMATE



LEASING CONTACT:
NEAL LADER
 Director of Leasing
 216.831.9110 [O]
 216.310.1956 [C]
 216.292.7529 [F]
 nlader@azmanagement.com

AZ MANAGEMENT CO.
 3439 West Brainard
 Suite 260
 Woodmere, Ohio
 44122
 216.831.9110
AZmanagement.com



AVAILABLE

SUITE 240
1074 S.F.

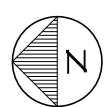
SUITE 220
638 S.F.

SUITE 200
4148 S.F.

AVAILABLE

SUITE 260
1380 S.F.

SUITE
320 S.F.

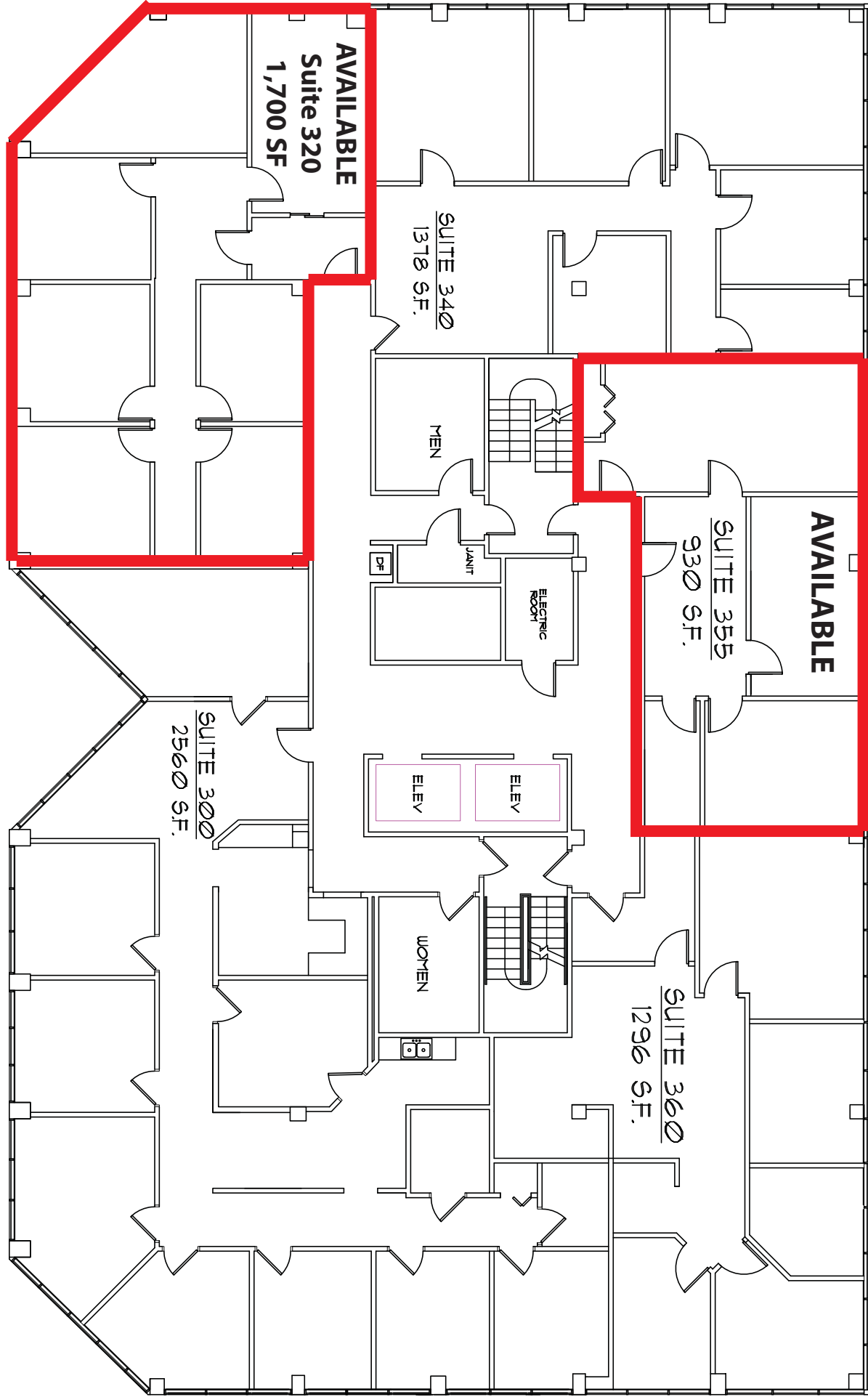


SECOND FLOOR PLAN

SUITE SIZES ARE APPROXIMATE

LEASING
CONTACT:
NEAL LADER
Director of Leasing
216.831.9110 [O]
216.310.1956 [C]
216.292.7529 [F]
nlader@azmanagement.com

AZ MANAGEMENT CO.
3439 West Brainard
Suite 260
Woodmere, Ohio
44122
216.831.9110
AZmanagement.com



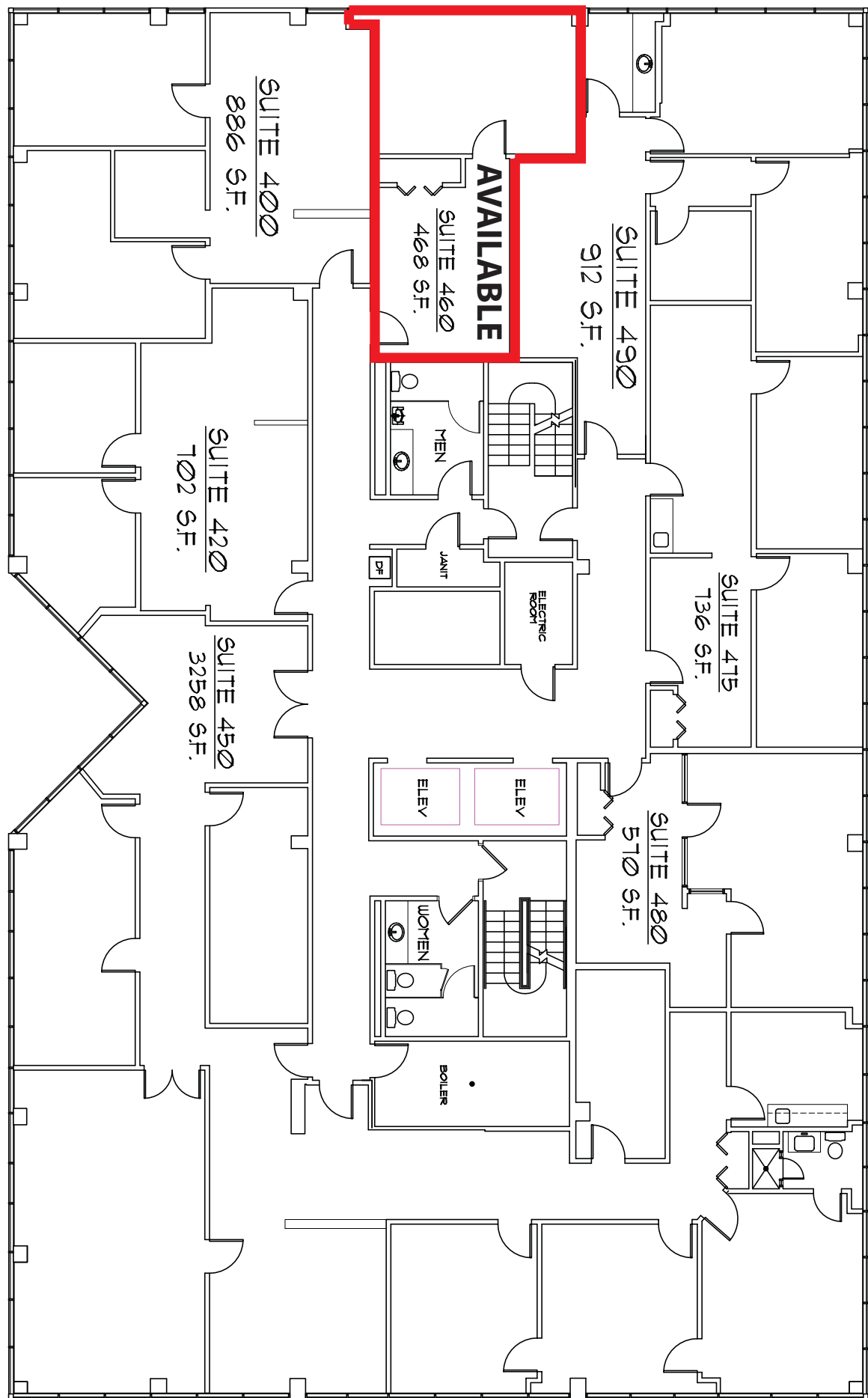
THIRD FLOOR PLAN

SUITE SIZES ARE APPROXIMATE



LEASING CONTACT:
NEAL LADER
 Director of Leasing
 216.831.9110 [O]
 216.310.1956 [C]
 216.292.7529 [F]
 nlader@azmanagement.com

AZ MANAGEMENT CO.
 3439 West Brainard
 Suite 260
 Woodmere, Ohio
 44122
 216.831.9110
AZmanagement.com



AVAILABLE

SUITE 460
468 S.F.

SUITE 400
886 S.F.

SUITE 490
912 S.F.

SUITE 475
136 S.F.

SUITE 420
702 S.F.

SUITE 450
3258 S.F.

SUITE 480
570 S.F.



FOURTH FLOOR PLAN

SUITE SIZES ARE APPROXIMATE

LEASING
CONTACT:
NEAL LADER
Director of Leasing
216.831.9110 [O]
216.310.1956 [C]
216.292.7529 [F]
nlader@azmanagement.com

AZ MANAGEMENT CO.
3439 West Brainard
Suite 260
Woodmere, Ohio
44122
216.831.9110
AZmanagement.com